

ABOUT CHINA TELECOM

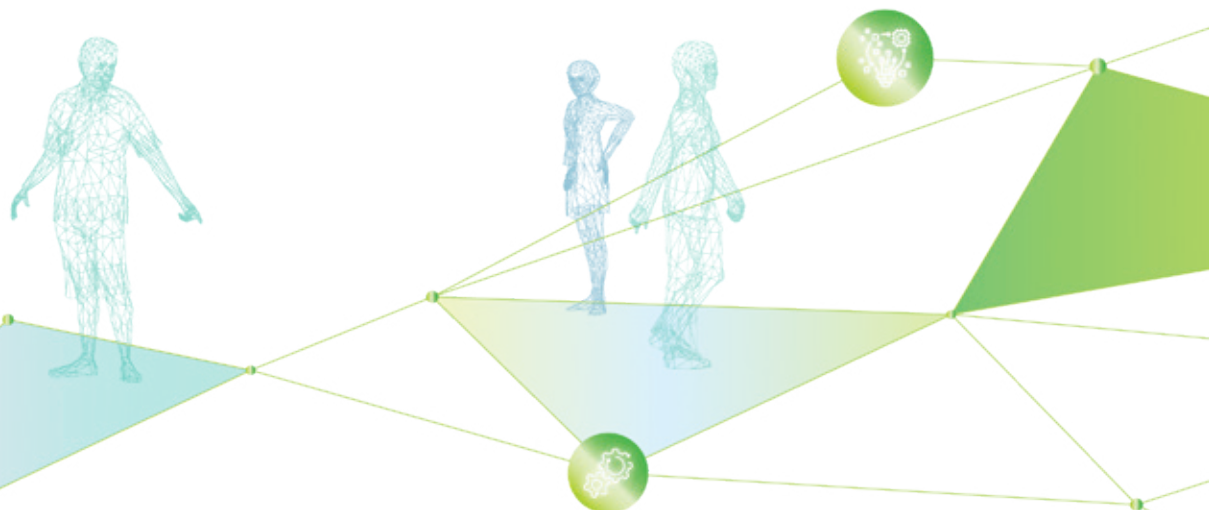
Company Profile and Company Strategy

COMPANY PROFILE

China Telecom Corporation Limited (“China Telecom” or “the Company”) is a leading large-scale integrated intelligent information service operator in the world whose principal business is the provision of fundamental telecommunications businesses such as wireline, mobile communications and satellite communications services, value-added telecommunications businesses such as Internet access services, information services and other related businesses. The Company’s A Shares and H Shares are listed on the Shanghai Stock Exchange and the Main Board of The Stock Exchange of Hong Kong Limited respectively.

COMPANY STRATEGY

China Telecom firmly fulfils its responsibilities in building Cyberpower and Digital China as well as maintaining network and information security. Anchoring on its mission and vision of building a service-oriented, technology-oriented and secured enterprise, the Company fully and deeply implements its Cloudification and Digital Transformation strategy. Insisting on the customer-oriented approach, China Telecom strengthens the core capabilities of sci-tech innovation and speeds up the construction of new information infrastructure that is cloud-network integrated, green and secure. The Company builds a big platform for empowering digital transformation of the economy and society, comprehensively deepens reforms and opening up, pushes forward high-quality development on all fronts, and accelerates the building of a world-class enterprise.



Executive Directors and Management of the Company



KE RUIWEN

Executive Director, Chairman and Chief Executive Officer



SHAO GUANGLU

Executive Director, President and Chief Operating Officer



LIU GUIQING

Executive Director and Executive Vice President



TANG KE

Executive Director and Executive Vice President



LI YINGHUI

Executive Director, Executive Vice President, Chief Financial Officer and Secretary of the Board



LI JUN

Executive Director